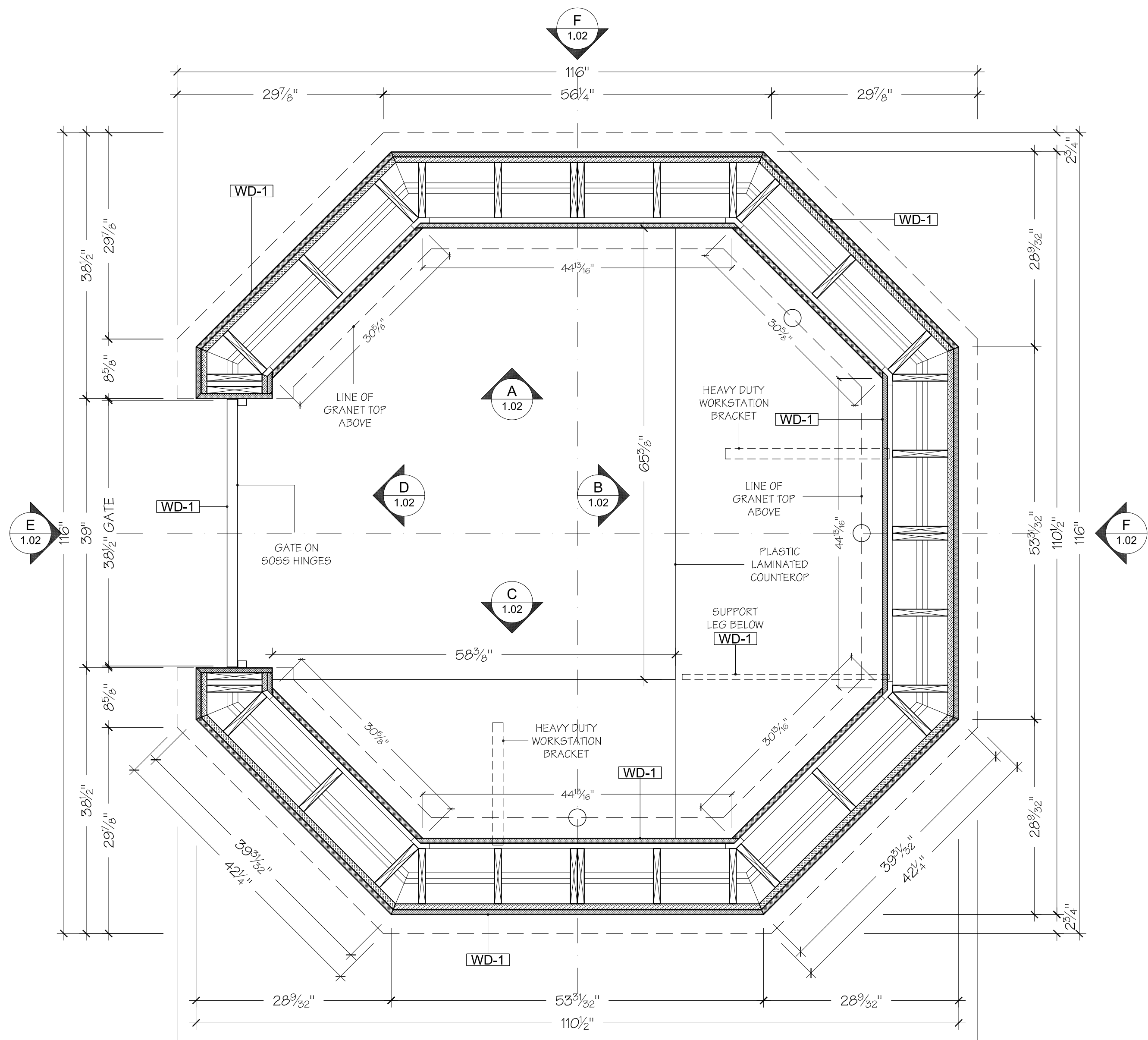


5 SECTION PLAN
 SCALE: 1" = 1'-0"
 RECEPTION SECURITY DESK
 RECEPTION



6 SECTION PLAN
 SCALE: 1" = 1'-0"
 RECEPTION SECURITY DESK
 RECEPTION

MATERIALS

WD-1	MAPLE VENEER ON MEDIUM DENSITY FIBERBOARD CORE
WD-2	MAPLE VENEER ON PLYWOOD CORE
WD-3	SOLID MAPLE WOOD
AL-1	BRUSHED ALUMINUM 2022 FORMICA DECOMETAL
AL-2	ALUMINUM BAR, BRUSHED 1/2" X 1 3/4"
PL-1	PLASTIC LAMINATE ON PARTICLE BOARD CORE, COLOR T.B.D.
ST-1	STONE NATURAL GRANITE G763-CAFE IMPERIAL POLISHED

HARDWARE

H-1	WORK STATION HEAVY DUTY BRACKET 24" X 24"
H-2	WORK STATION HEAVY DUTY BRACKET 24" X 18"
H-3	MOCKETT EDP FLIP-TOP SERIES 2 1/2" HOLE PLASTIC GROMMET
H-4	S055 212 INVISIBLE HINGES
H-5	MAGNETIC CATCH 2.5 - 3.5 KG PULL 264-03.101

SPECIAL NOTES

ALL DIMENSIONS ARE BASED ON NUMBERS AND SCALES REFLECTED ON ARCHITECTURAL PLANS AND ARE SUBJECT OF FIELD DIMENSIONING AND VERIFICATION.

Submittals

1. 12/08/2009 FOR APPROVAL
- 2.
- 3.
- 4.

Job Name

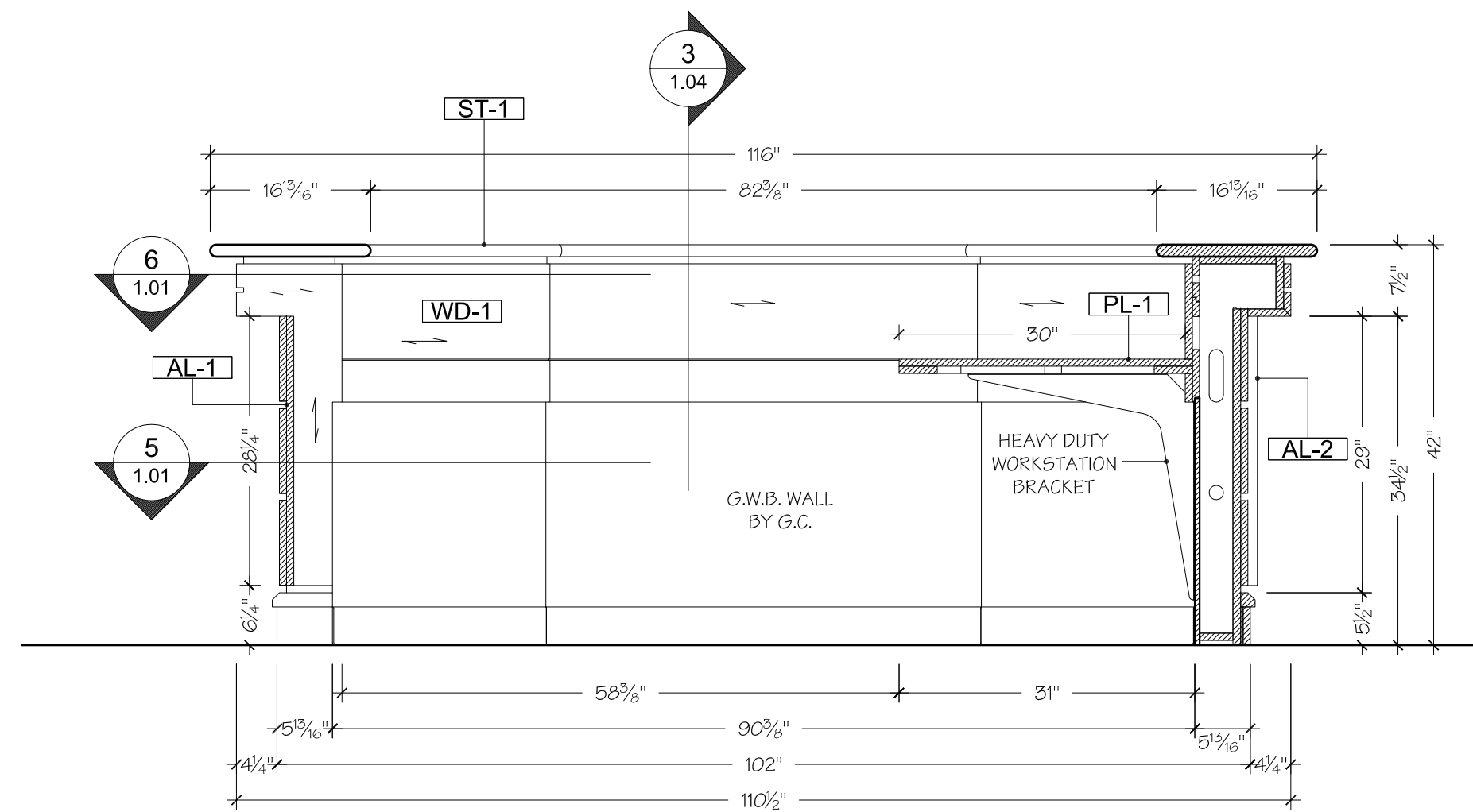
BUILDING
 BALTIMORE, MD

Title RECEPTION/SECURITY DESK

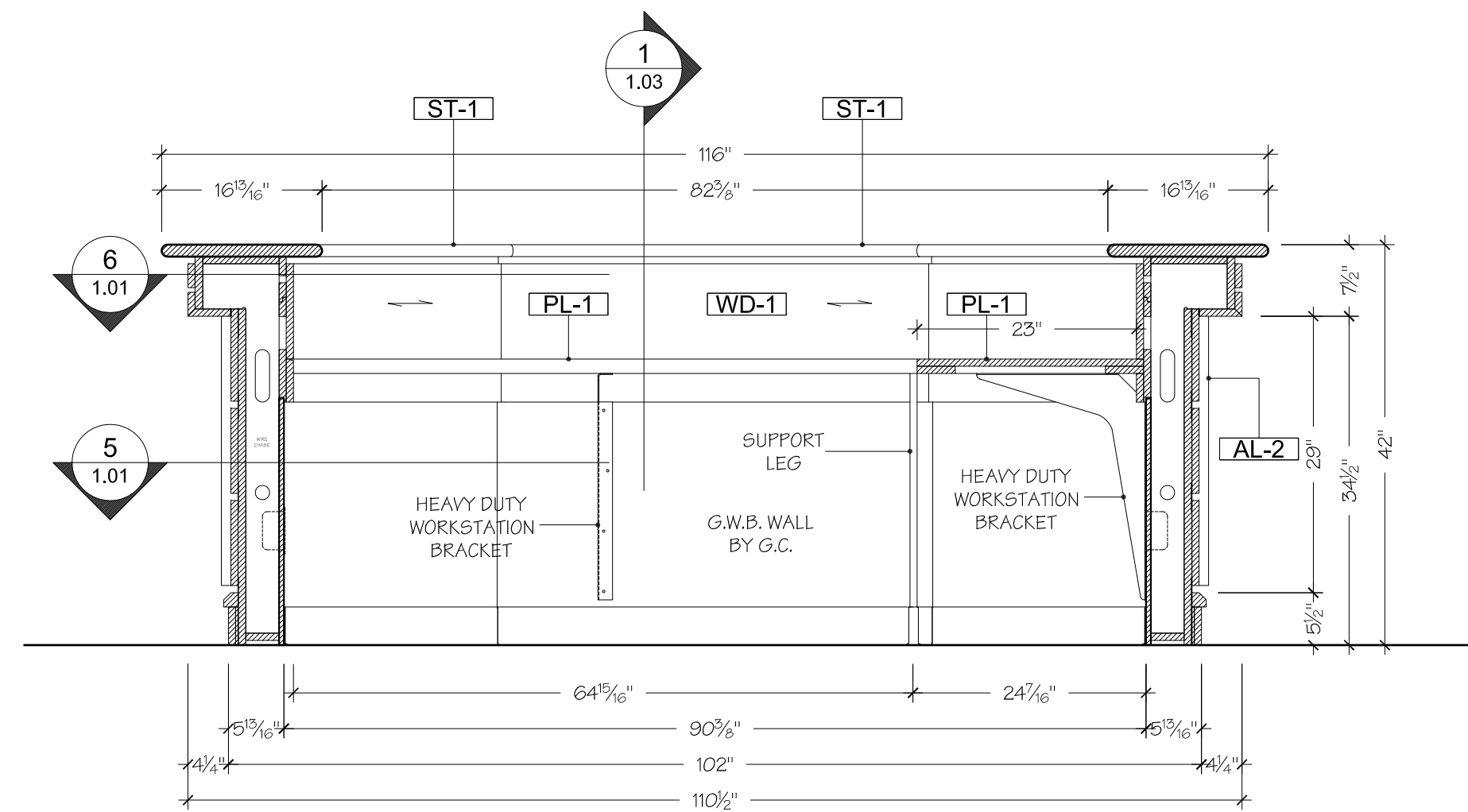
Client

Miscellaneous

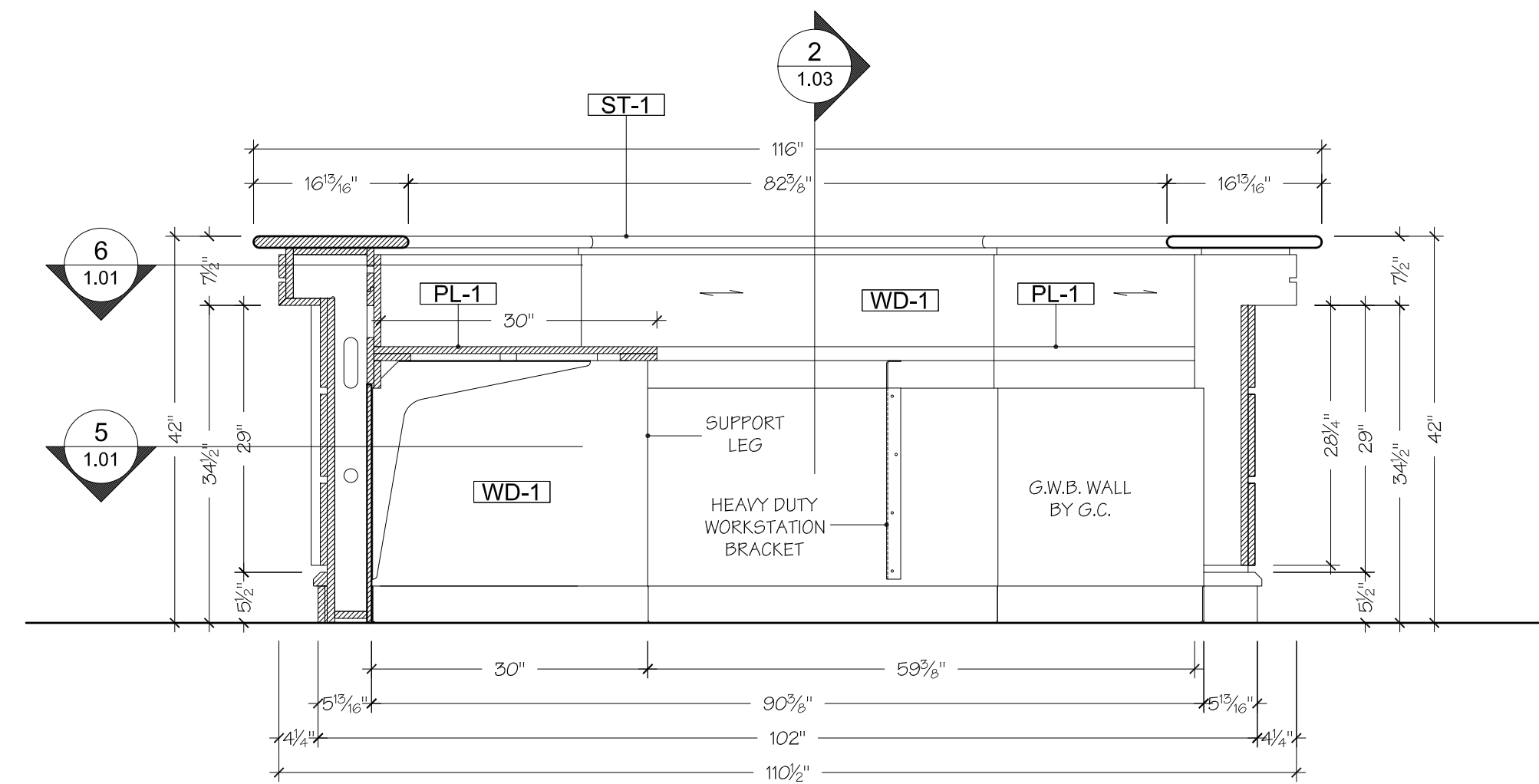
File Data	10:12
Date	12/08/2009
Scale	AS NOTED
Drawn By	MT
Job Number	JW113009-53
Work Order	001
Page	1.01



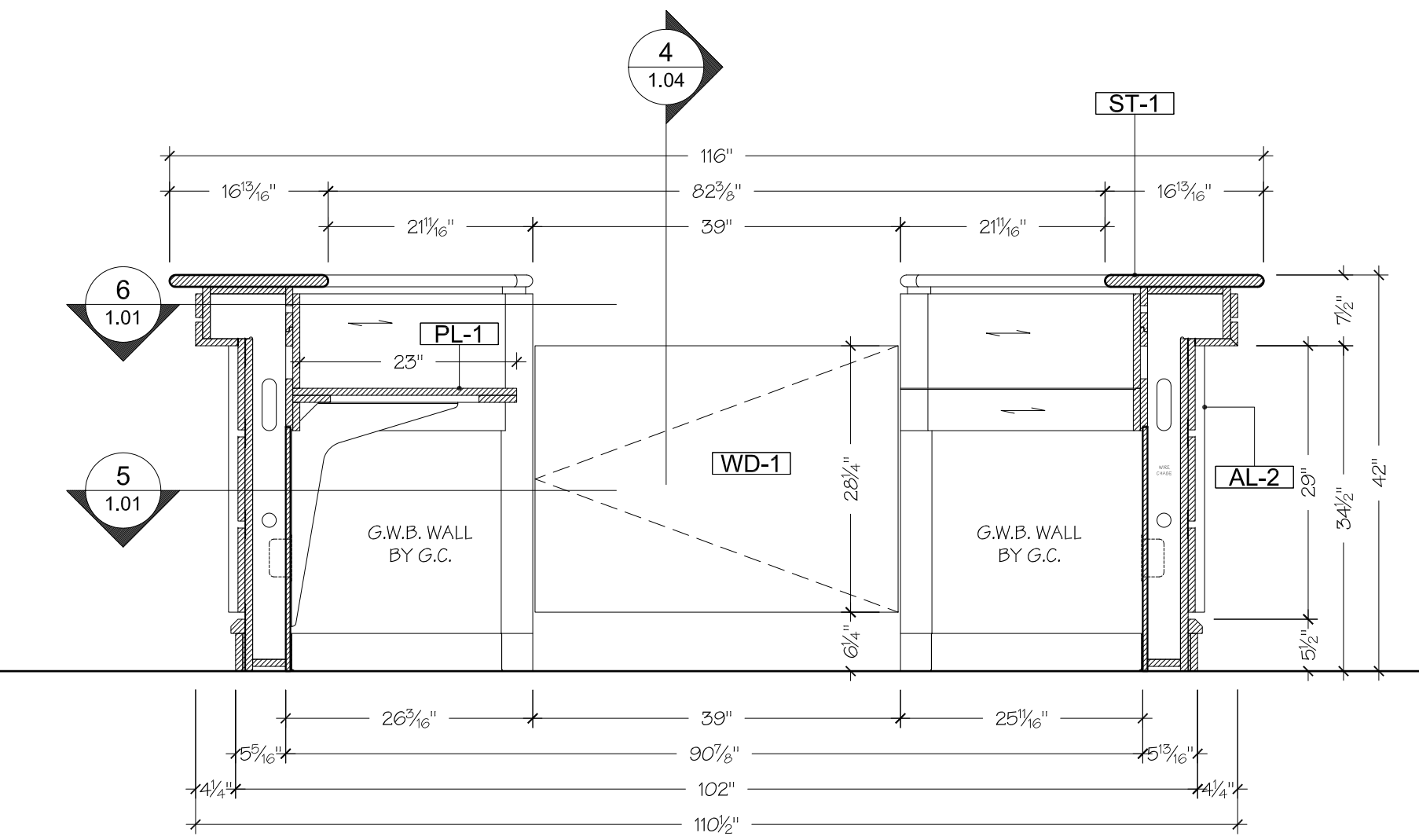
A ELEVATION RECEPTION SECURITY DESK
SCALE: 3/4" = 1'-0"
RECEPTION



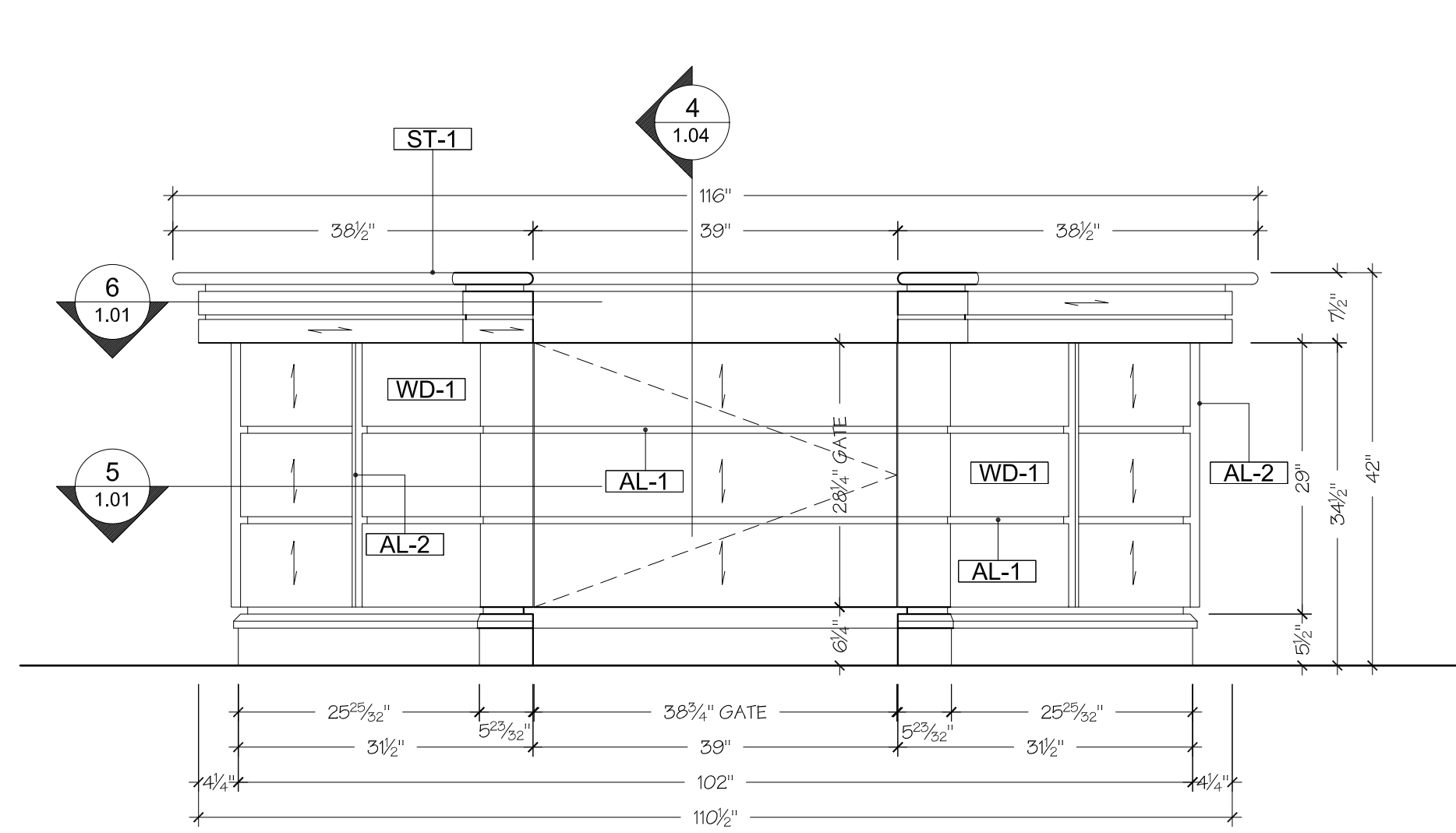
B ELEVATION RECEPTION SECURITY DESK
SCALE: 3/4" = 1'-0"
RECEPTION



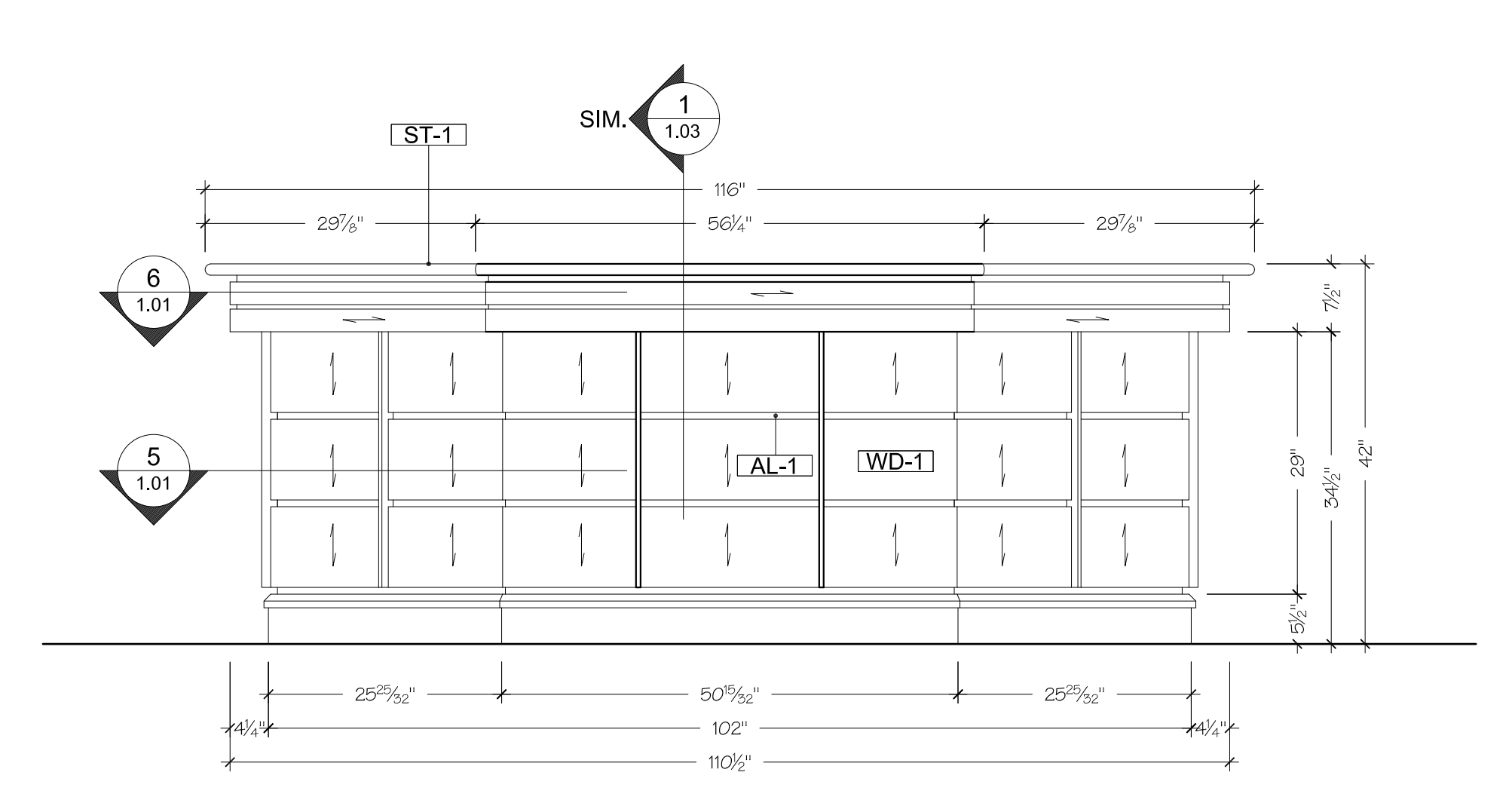
C ELEVATION RECEPTION SECURITY DESK
SCALE: 3/4" = 1'-0"
RECEPTION



D ELEVATION RECEPTION SECURITY DESK
SCALE: 3/4" = 1'-0"
RECEPTION



E ELEVATION RECEPTION SECURITY DESK
SCALE: 3/4" = 1'-0"
RECEPTION



F ELEVATION RECEPTION SECURITY DESK
SCALE: 3/4" = 1'-0"
RECEPTION

MATERIALS

WD-1	MAPLE VENEER ON MEDIUM DENSITY FIBERBOARD CORE
WD-2	MAPLE VENEER ON PLYWOOD CORE
WD-3	SOLID MAPLE WOOD
AL-1	BRUSHED ALUMINUM 2022 FORMICA DECOMETAL
AL-2	ALUMINUM BAR, BRUSHED 1/2" X 1 3/4"
PL-1	PLASTIC LAMINATE ON PARTICLE BOARD CORE, COLOR T.B.D.
ST-1	STONE NATURAL GRANITE G763-CAFE IMPERIAL POLISHED

HARDWARE

H-1	WORK STATION HEAVY DUTY BRACKET 24" X 24"
H-2	WORK STATION HEAVY DUTY BRACKET 24" X 18"
H-3	MOCKETT EDP FLIP-TOP SERIES 2 1/2" HOLE PLASTIC GROMMET
H-4	S055 212 INVISIBLE HINGES
H-5	MAGNETIC CATCH 2.5 - 3.5 KG PULL 264-03-101

SPECIAL NOTES

ALL DIMENSIONS ARE BASED ON NUMBERS AND SCALES REFLECTED ON ARCHITECTURAL PLANS AND ARE SUBJECT OF FIELD DIMENSIONING AND VERIFICATION.

Submittals

1.	12/08/2009 FOR APPROVAL
2.	
3.	
4.	

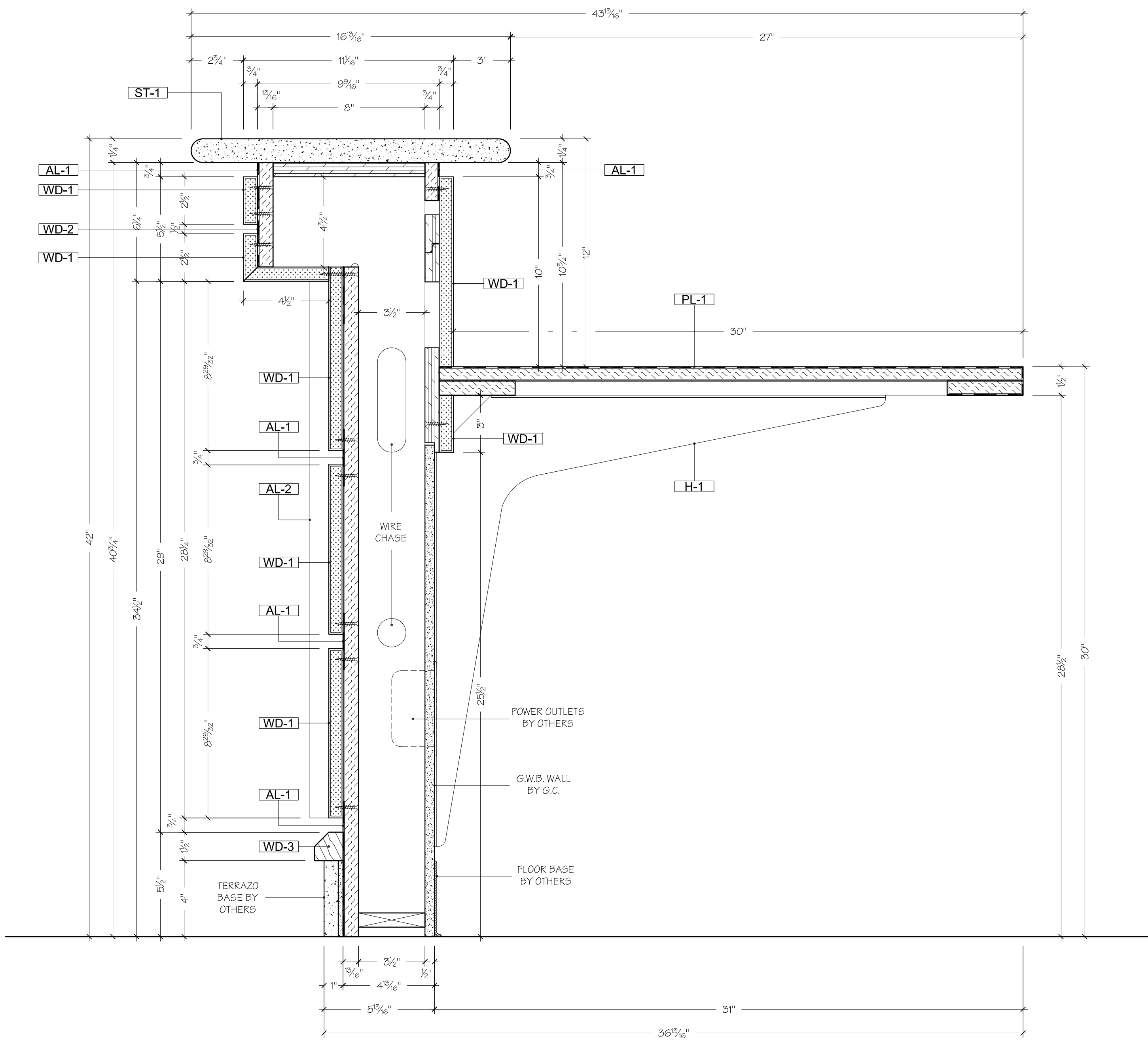
Job Name
BUILDING
BALTIMORE, MD

Title
RECEPTION/SECURITY DESK

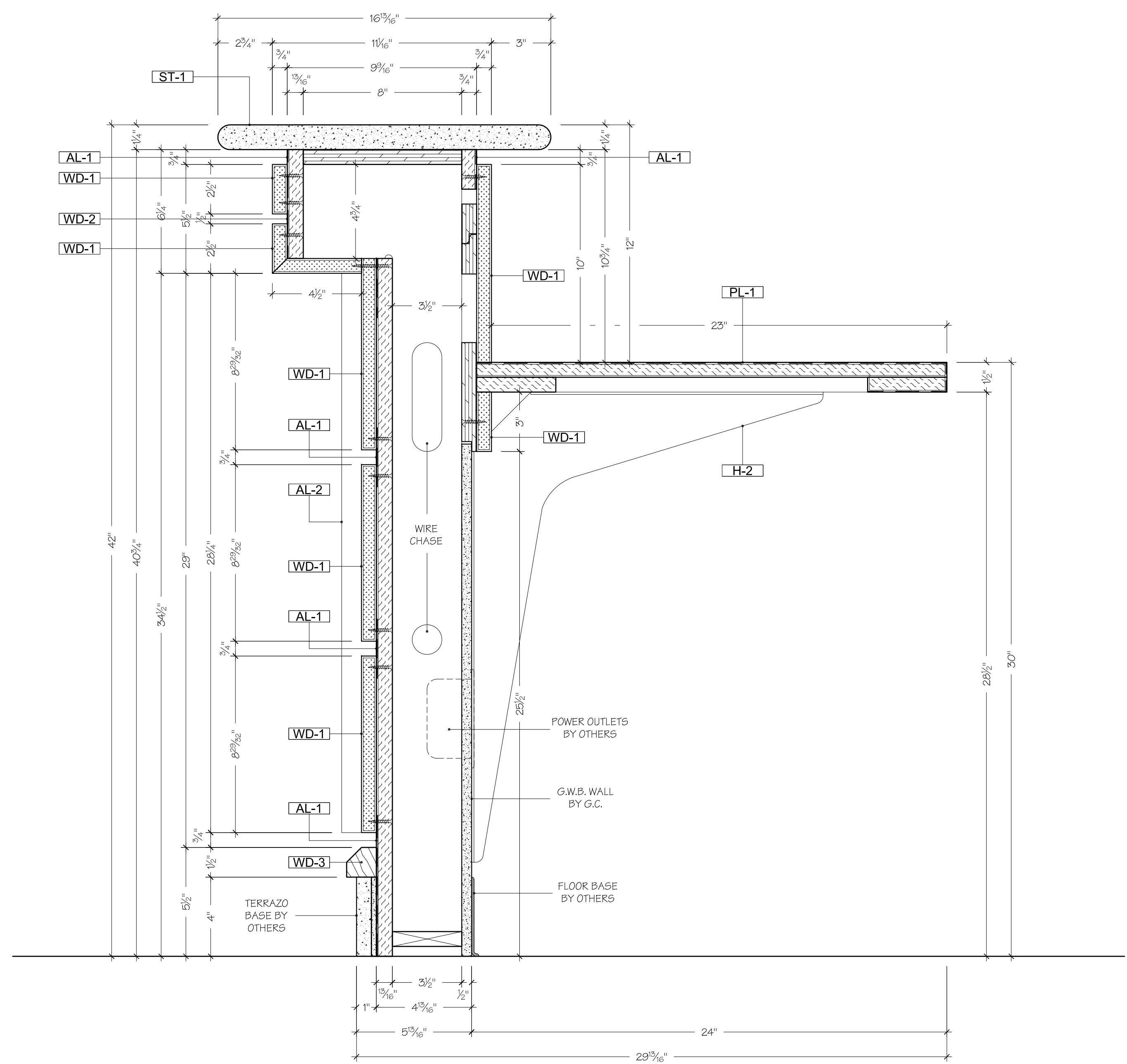
Client

Miscellaneous

File Data	10:12
Date	12/08/2009
Scale	AS NOTED
Drawn By	MT
Job Number	JW113009-53
Work Order	001
Page	1.02



1 SECTION
 SCALE: 3" = 1'-0"
 RECEPTION SECURITY DESK
 RECEPTION



2 SECTION
 SCALE: 3" = 1'-0"
 RECEPTION SECURITY DESK
 RECEPTION

MATERIALS	
WD-1	MAPLE VENEER ON MEDIUM DENSITY FIBERBOARD CORE
WD-2	MAPLE VENEER ON PLYWOOD CORE
WD-3	SOLID MAPLE WOOD
AL-1	BRUSHED ALUMINUM 2022 FORMICA DECOMETAL
AL-2	ALUMINUM BAR, BRUSHED 1/2" X 1 3/4"
PL-1	PLASTIC LAMINATE ON PARTICLE BOARD CORE, COLOR T.B.D.
ST-1	STONE NATURAL GRANITE G763-CAFE IMPERIAL POLISHED

HARDWARE	
H-1	WORK STATION HEAVY DUTY BRACKET 24" X 24"
H-2	WORK STATION HEAVY DUTY BRACKET 24" X 18"
H-3	MOCKETT EDP FLIP-TOP SERIES 2 1/2" HOLE PLASTIC GROMMET
H-4	S058 212 INVISIBLE HINGES
H-5	MAGNETIC CATCH 2.5 - 3.5 KG PULL 264-03.101

SPECIAL NOTES
 ALL DIMENSIONS ARE BASED ON NUMBERS AND SCALES REFLECTED ON ARCHITECTURAL PLANS AND ARE SUBJECT OF FIELD DIMENSIONING AND VERIFICATION.

Submittals
1. 12/08/2009 FOR APPROVAL
2.
3.
4.

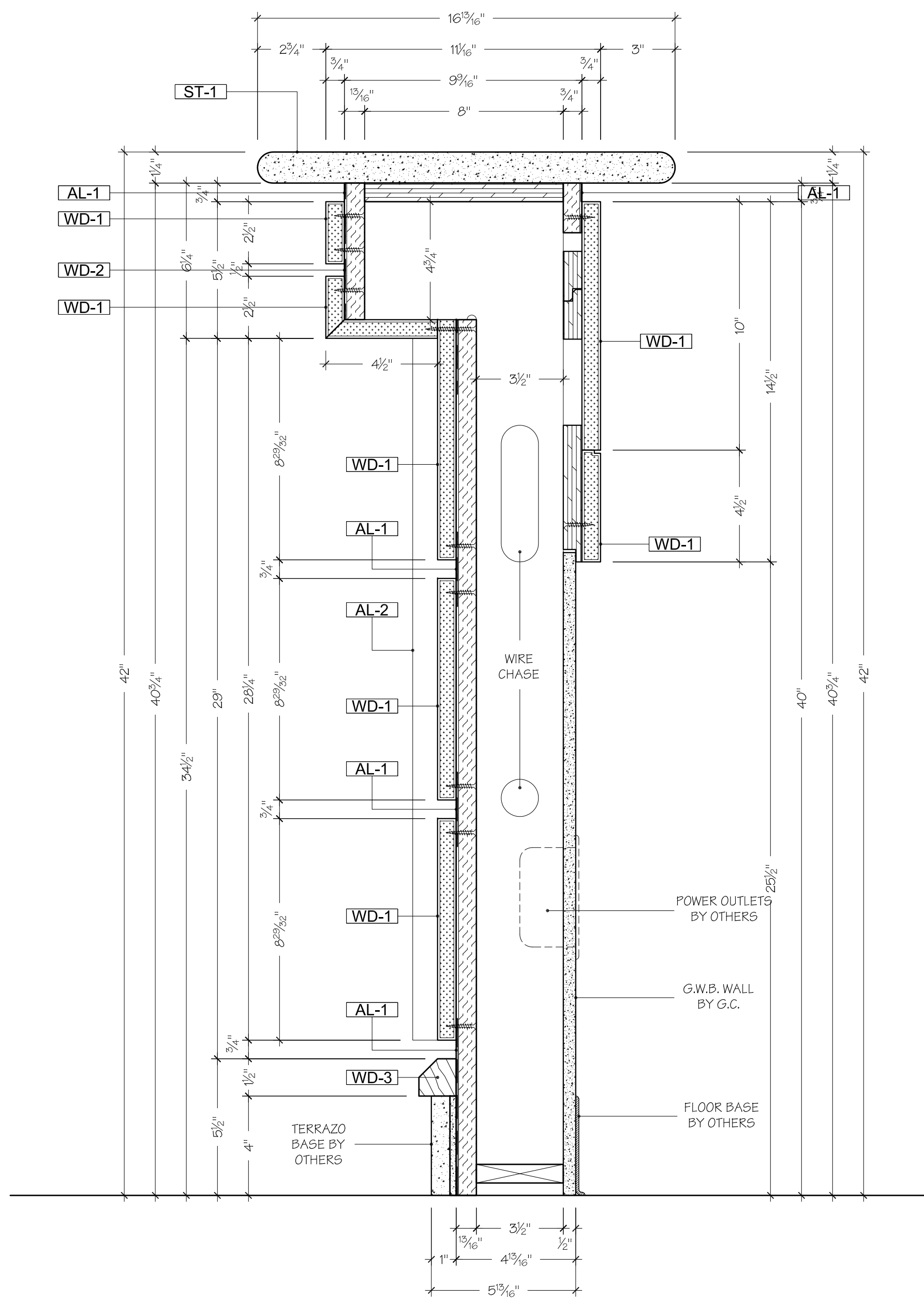
Job Name
 BUILDING
 BALTIMORE, MD

Title
 RECEPTION/SECURITY DESK

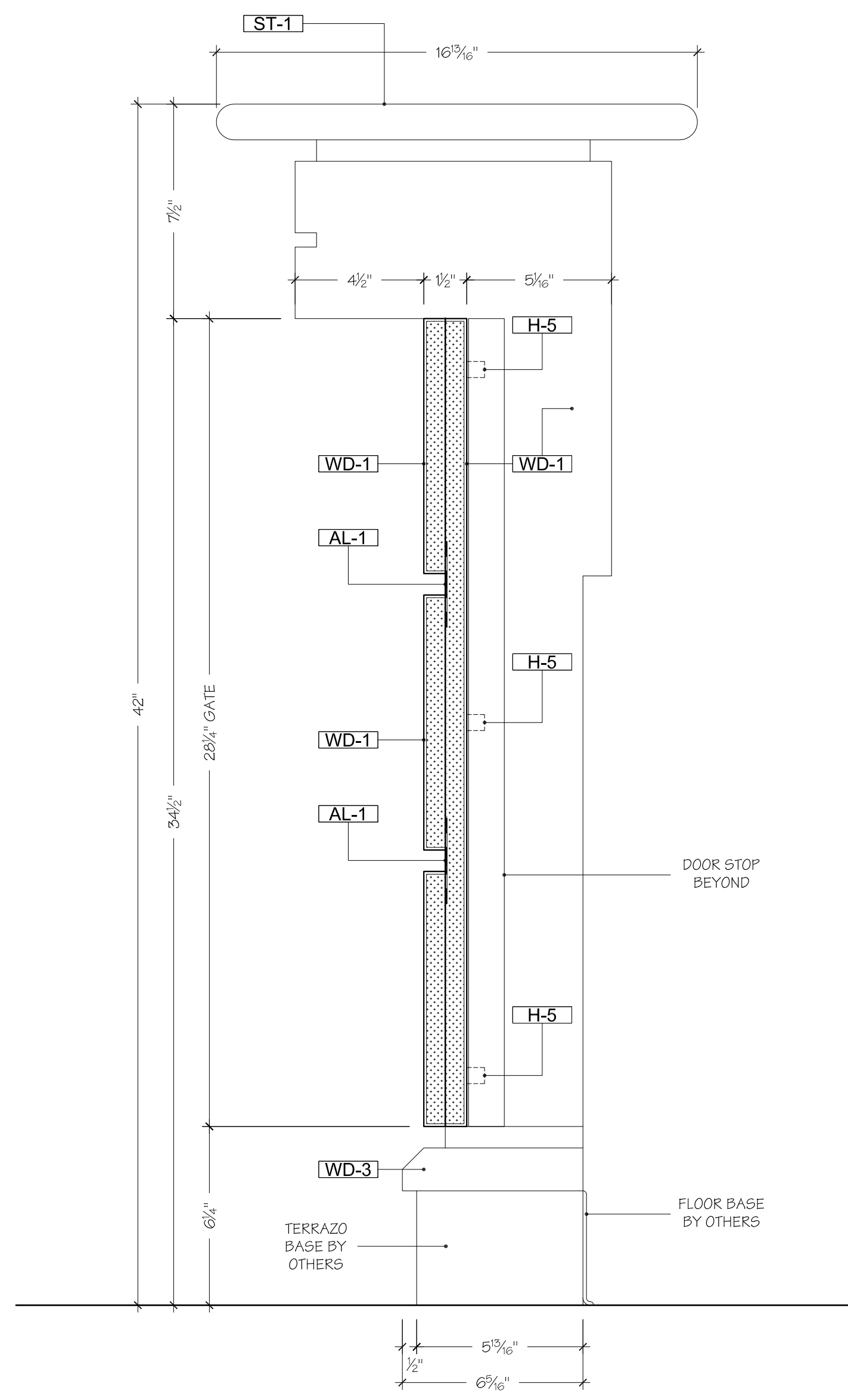
Client

Miscellaneous

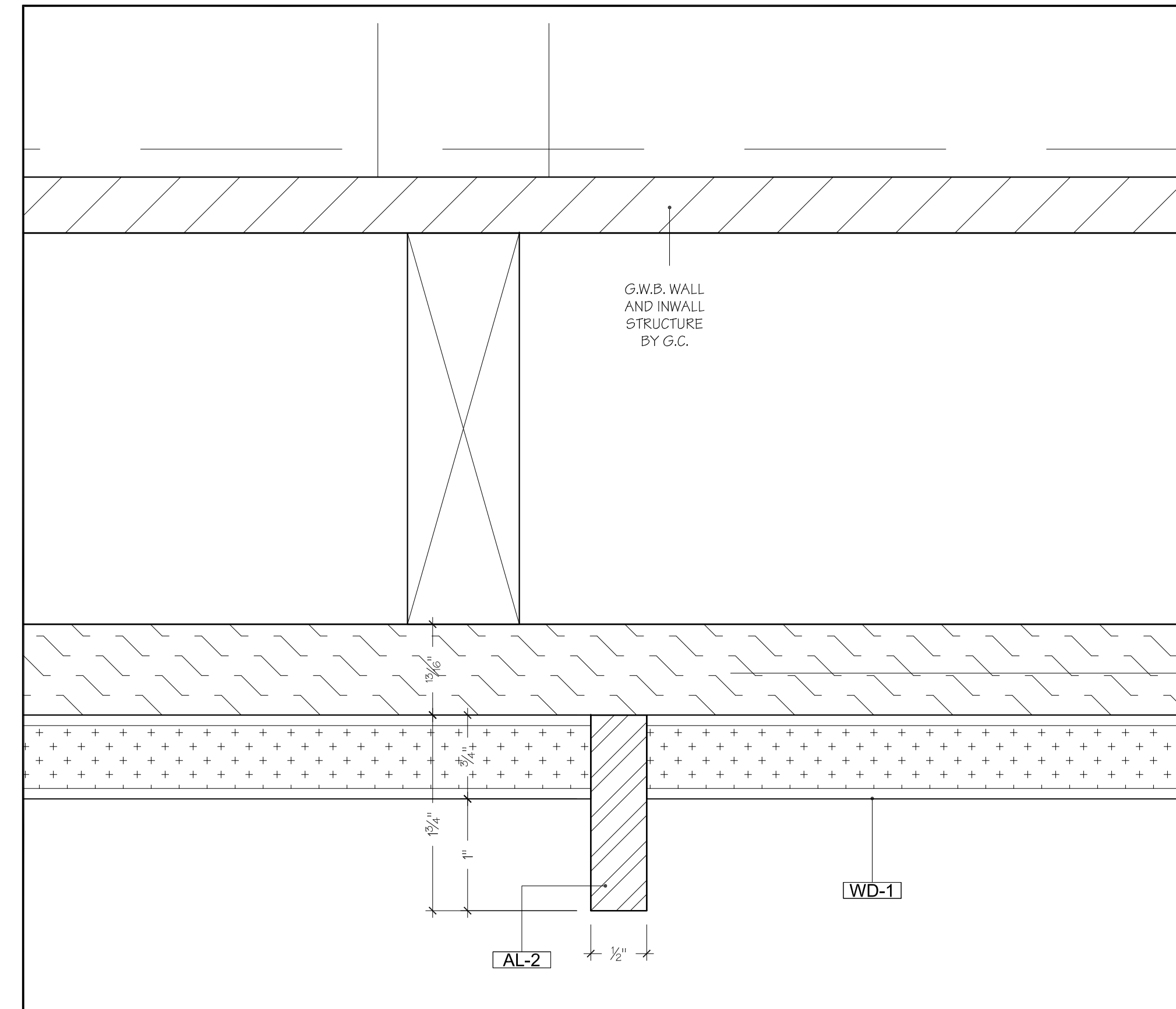
File Data	10:12
Date	12/08/2009
Scale	AS NOTED
Drawn By	MT
Job Number	JW113009-53
Work Order	001
Page	1.03



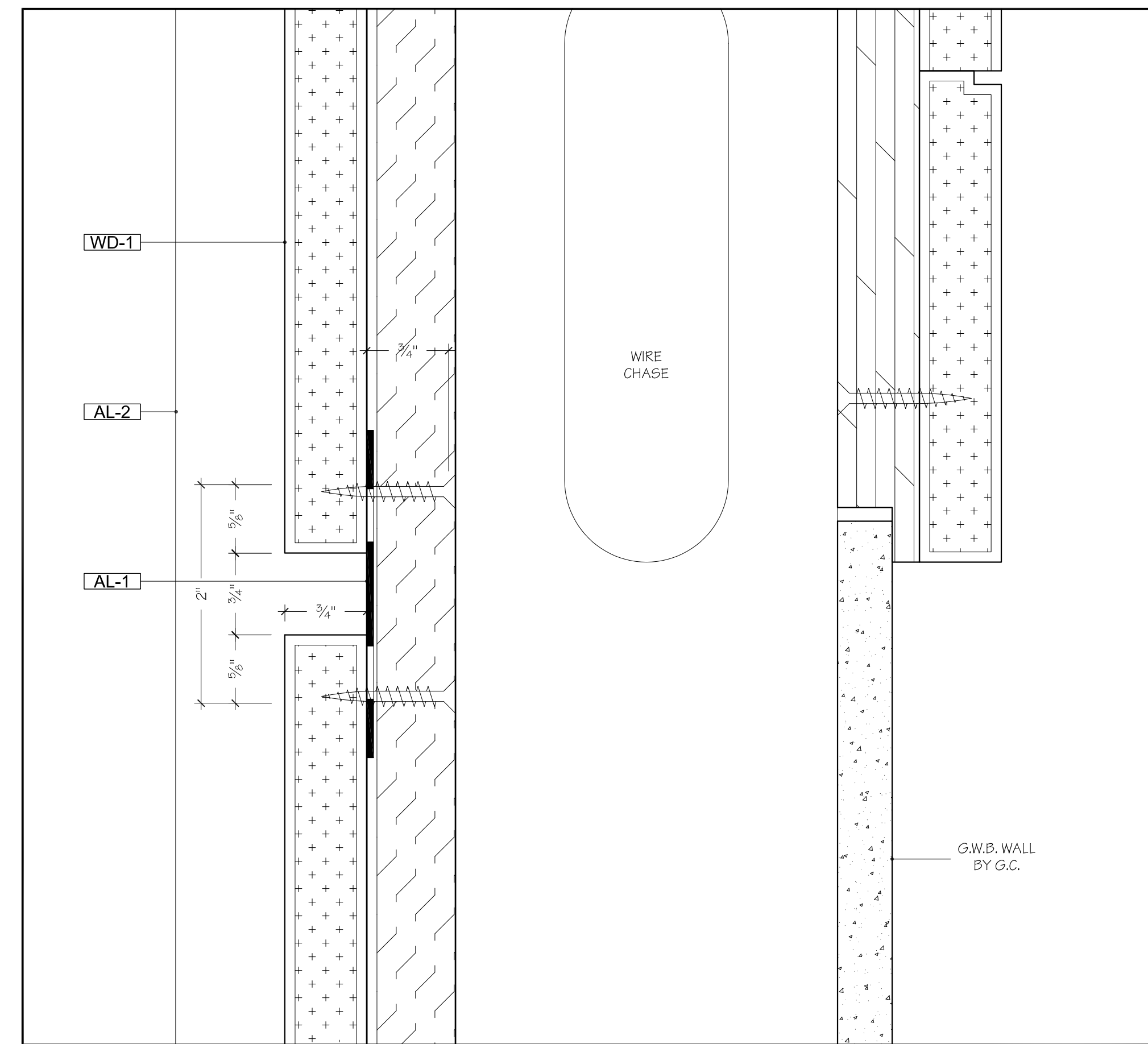
3 SECTION RECEPTION SECURITY DESK
SCALE: 3" = 1'-0" RECEPTION



4 SECTION RECEPTION SECURITY DESK
SCALE: 3" = 1'-0" RECEPTION



7 SECTION @ FRONT PANELS DETAILS & ALUMINUM BAR INSERT
SCALE: FULL RECEPTION DESK



8 SECTION @ FRONT PANELS DETAILS & HORIZONTAL REVEAL
SCALE: FULL RECEPTION DESK

MATERIALS

WD-1	MAPLE VENEER ON MEDIUM DENSITY FIBERBOARD CORE
WD-2	MAPLE VENEER ON PLYWOOD CORE
WD-3	SOLID MAPLE WOOD
AL-1	BRUSHED ALUMINUM 2022 FORMICA DECOMETAL
AL-2	ALUMINUM BAR, BRUSHED 1/2" X 1 3/4"
PL-1	PLASTIC LAMINATE ON PARTICLE BOARD CORE, COLOR T.B.D.
ST-1	STONE NATURAL GRANITE G763-CAFE IMPERIAL POLISHED

HARDWARE

H-1	WORK STATION HEAVY DUTY BRACKET 24" X 24"
H-2	WORK STATION HEAVY DUTY BRACKET 24" X 18"
H-3	MOCKETT EDP FLIP-TOP SERIES 2 1/2" HOLE PLASTIC GROMMET
H-4	S055 212 INVISIBLE HINGES
H-5	MAGNETIC CATCH 2.5 - 3.5 KG PULL 264-03.101

SPECIAL NOTES

ALL DIMENSIONS ARE BASED ON NUMBERS AND SCALES REFLECTED ON ARCHITECTURAL PLANS AND ARE SUBJECT OF FIELD DIMENSIONING AND VERIFICATION.

Submittals

1.	12/08/2009 FOR APPROVAL
2.	
3.	
4.	

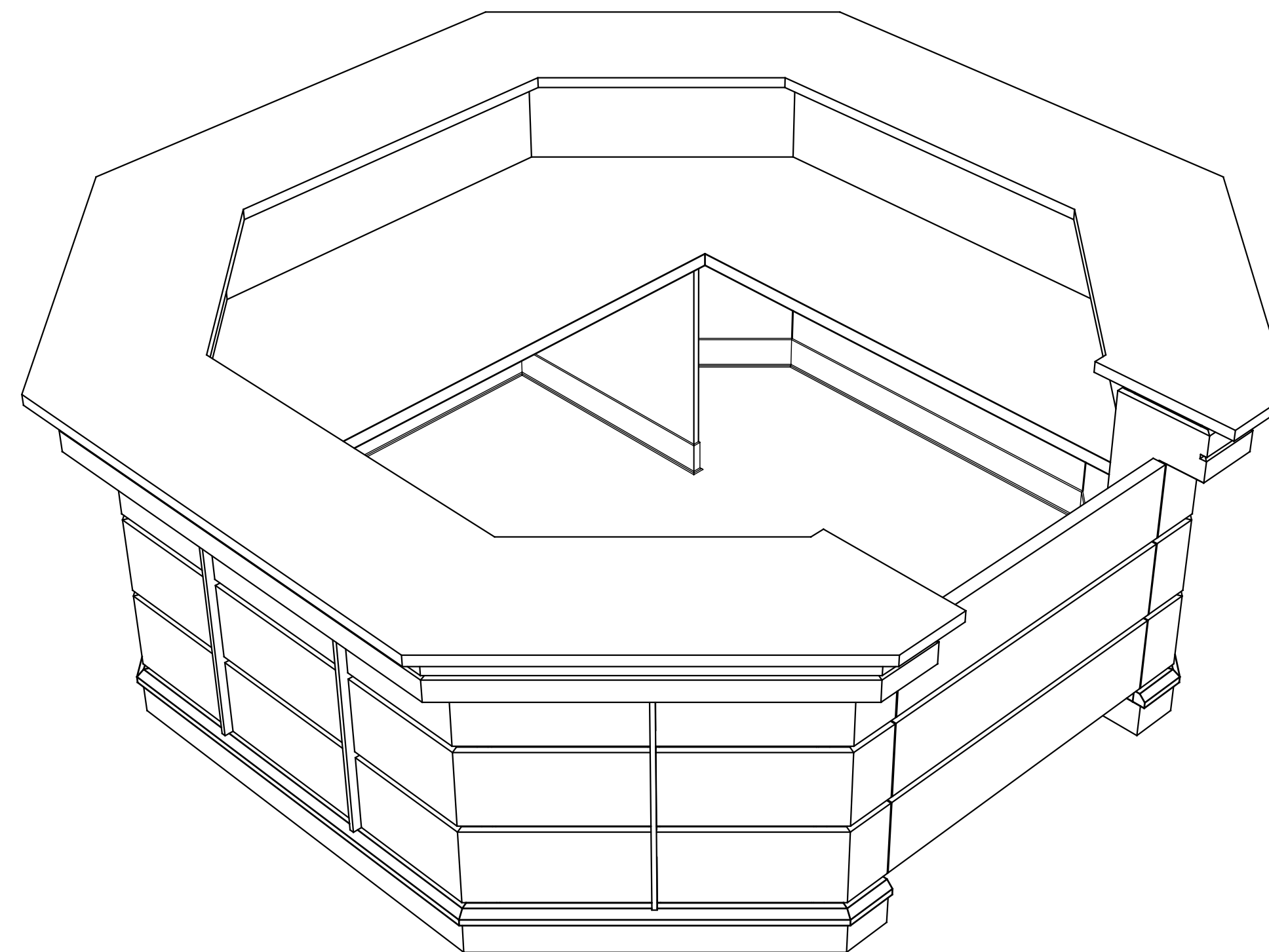
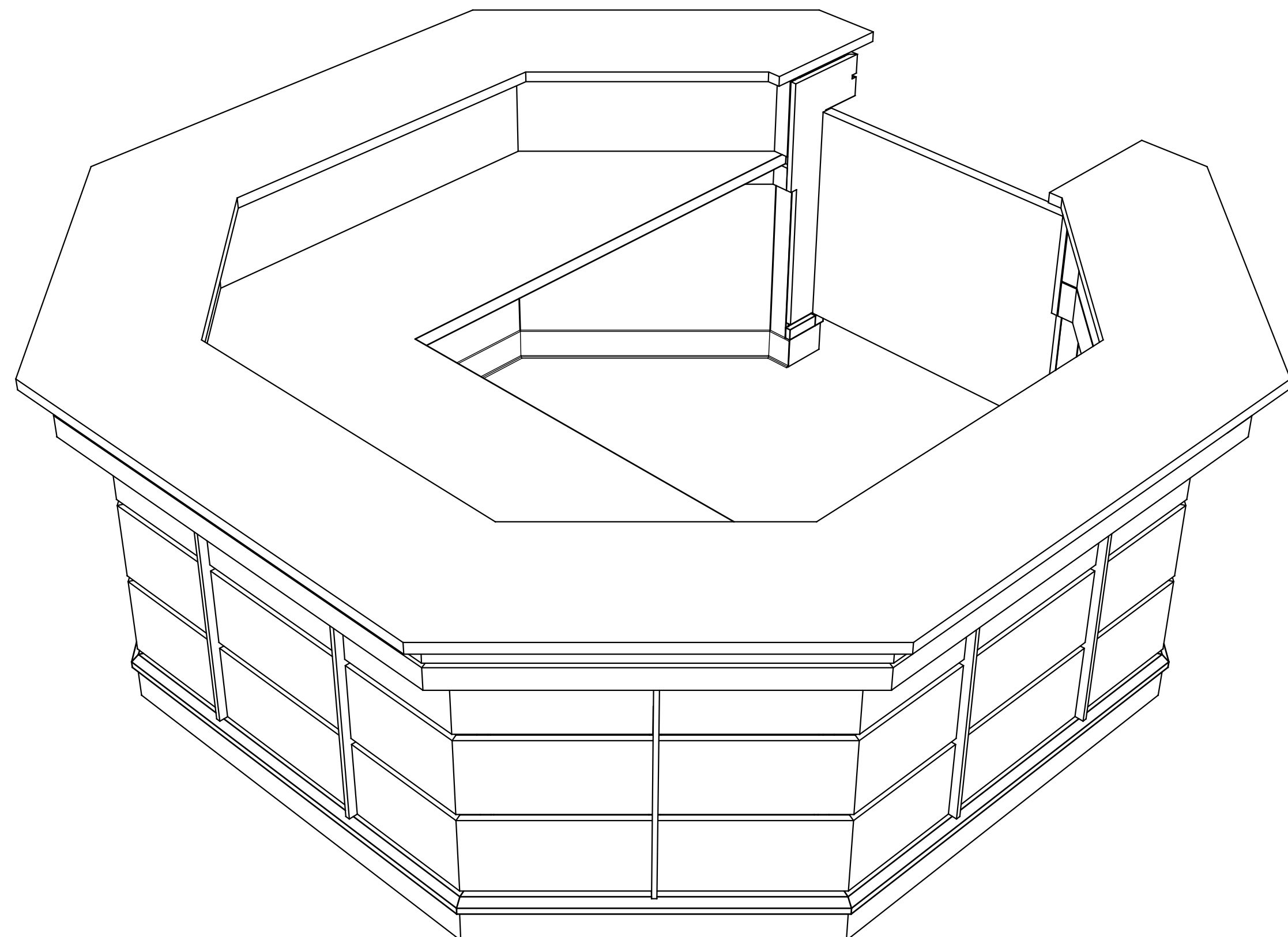
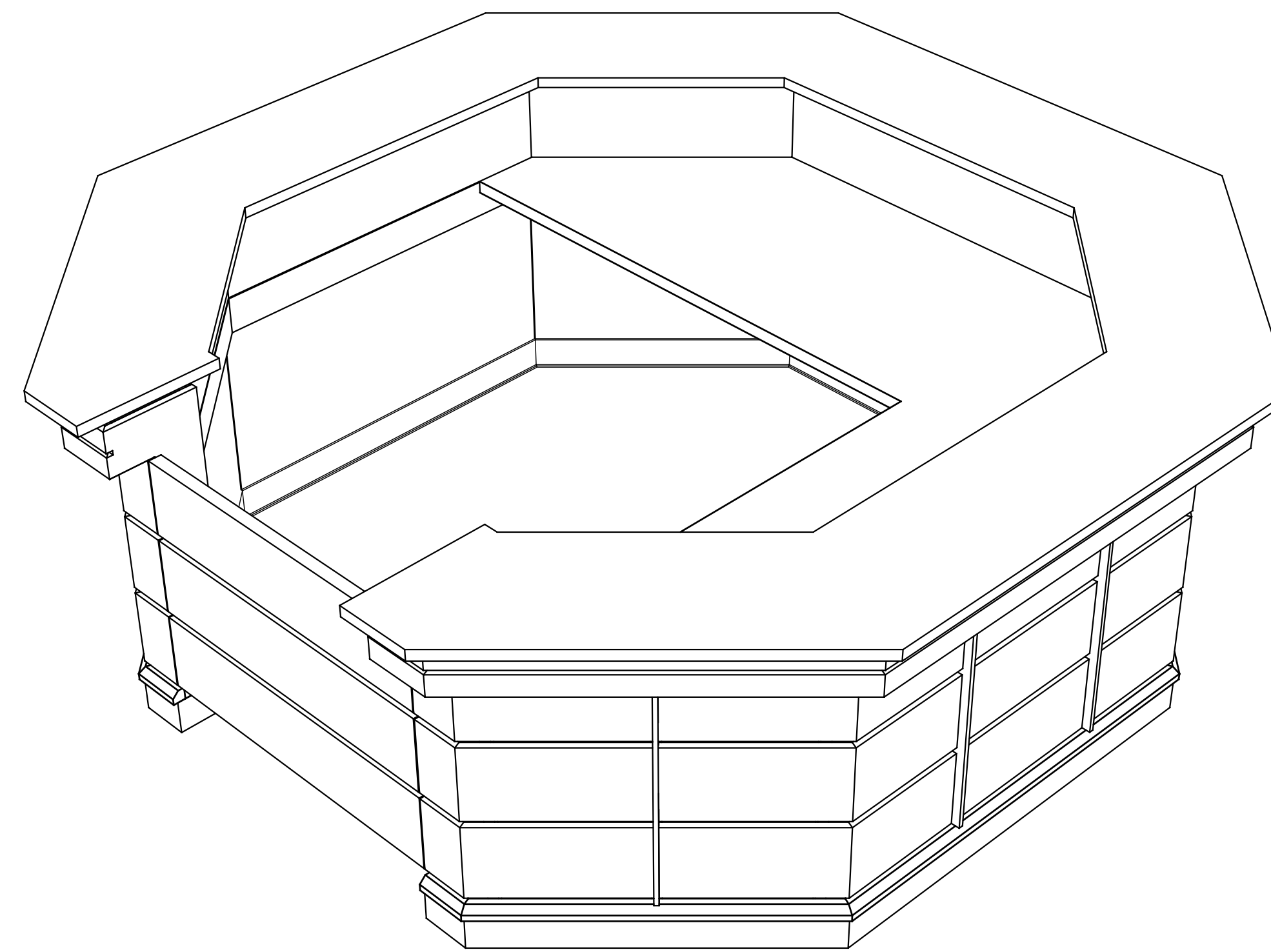
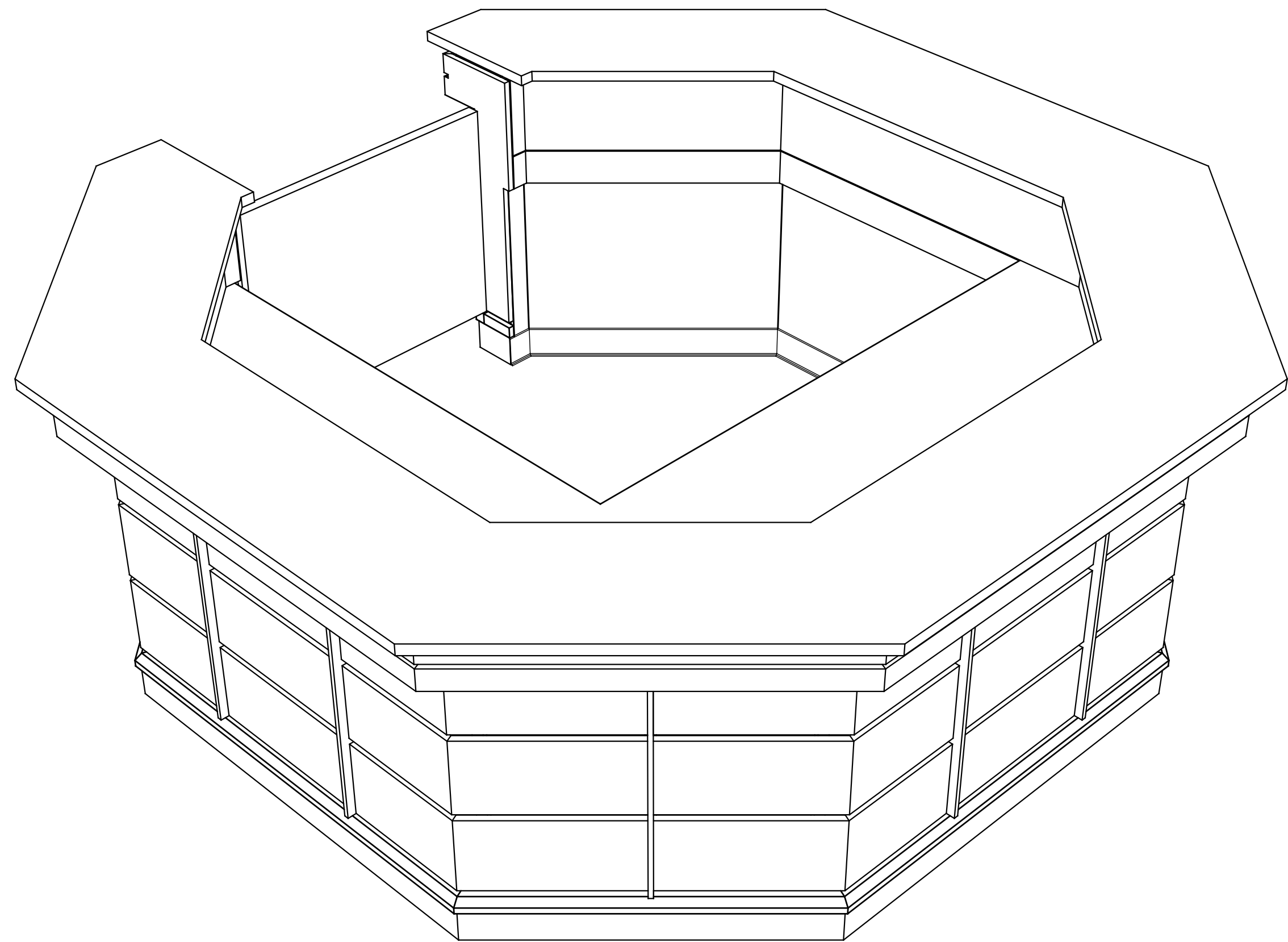
Job Name
BUILDING
BALTIMORE, MD

Title
RECEPTION/SECURITY DESK

Client

Miscellaneous

File Data	10:12
Date	12/08/2009
Scale	AS NOTED
Drawn By	MT
Job Number	JW113009-53
Work Order	001
Page	1.04



WD-1	MAPLE VENEER ON MEDIUM DENSITY FIBERBOARD CORE
WD-2	MAPLE VENEER ON PLYWOOD CORE
WD-3	SOLID MAPLE WOOD
AL-1	BRUSHED ALUMINUM 2022 FORMICA DECOMETAL
AL-2	ALUMINUM BAR, BRUSHED 1/2" X 1 3/4"
PL-1	PLASTIC LAMINATE ON PARTICLE BOARD CORE, COLOR T.B.D.
ST-1	STONE NATURAL GRANITE G763-CAFE IMPERIAL POLISHED

H-1	WORK STATION HEAVY DUTY BRACKET 24" X 24"
H-2	WORK STATION HEAVY DUTY BRACKET 24" X 18"
H-3	MOCKETT EDP FLIP-TOP SERIES 2 1/2" HOLE PLASTIC GROMMET
H-4	S056 212 INVISIBLE HINGES
H-5	MAGNETIC CATCH 2.5 - 3.5 KG PULL 264-03.101

SPECIAL NOTES

ALL DIMENSIONS ARE BASED ON NUMBERS AND SCALES REFLECTED ON ARCHITECTURAL PLANS AND ARE SUBJECT OF FIELD DIMENSIONING AND VERIFICATION.

Submittals	1. 12/08/2009 FOR APPROVAL
	2.
	3.
	4.

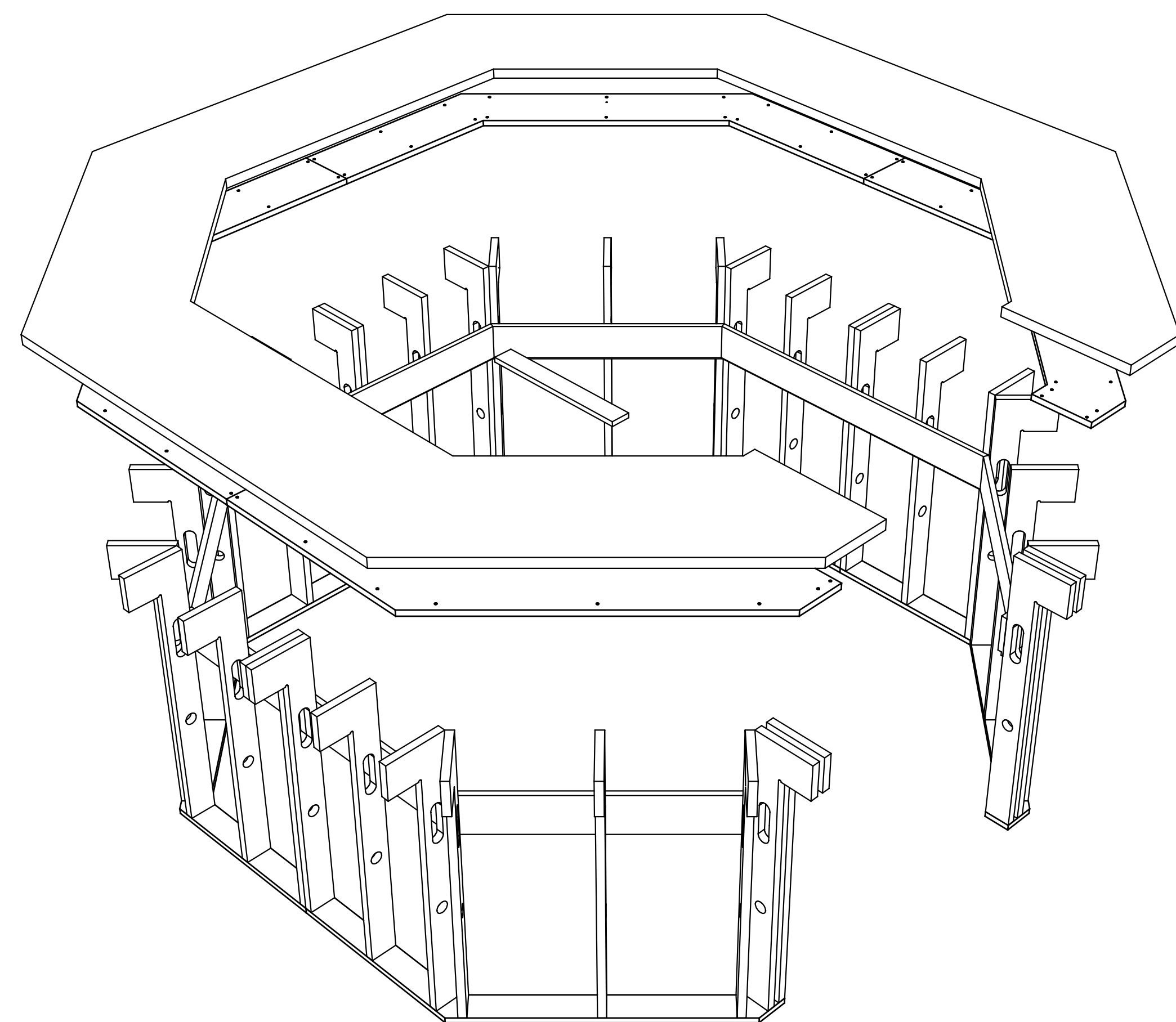
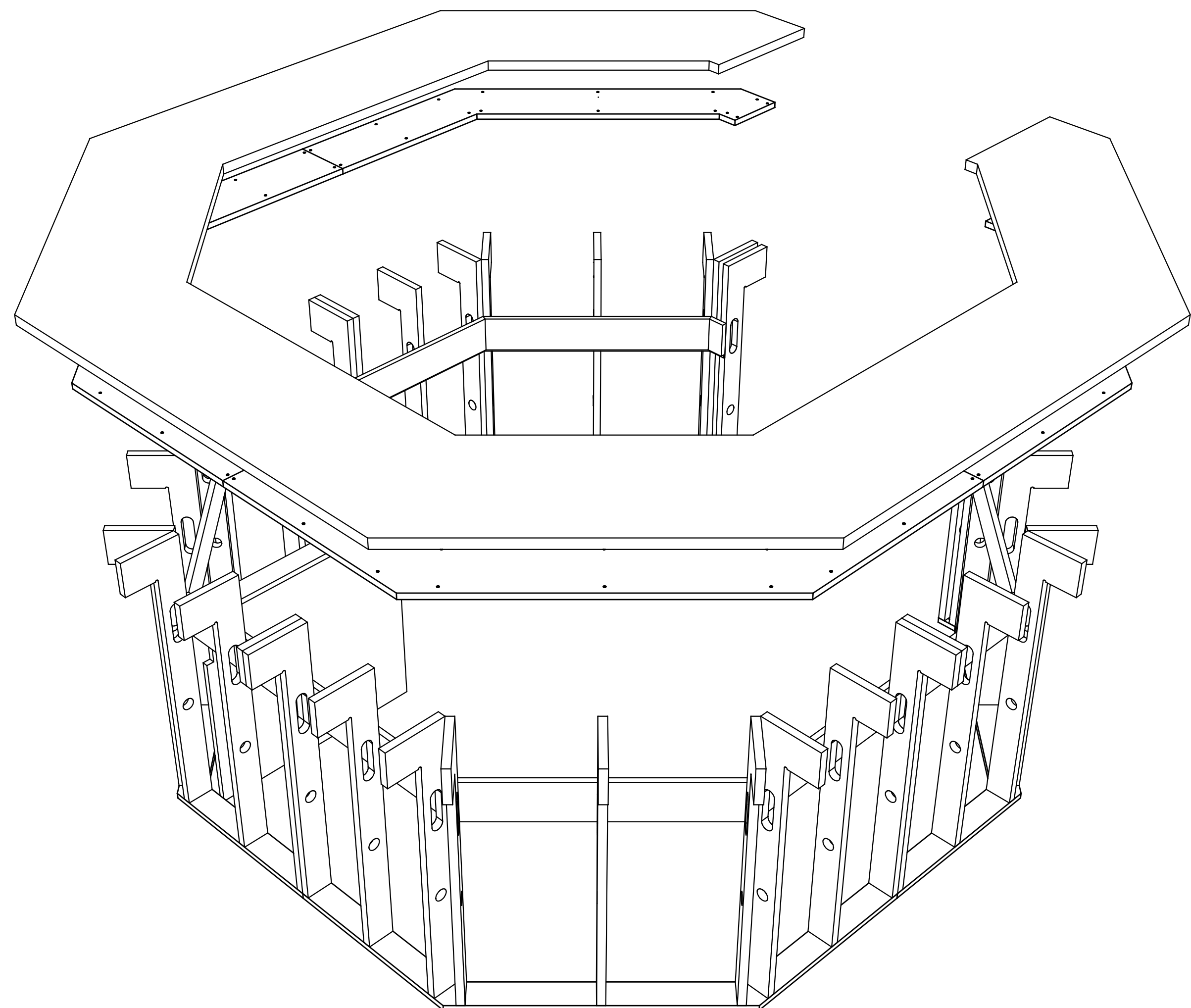
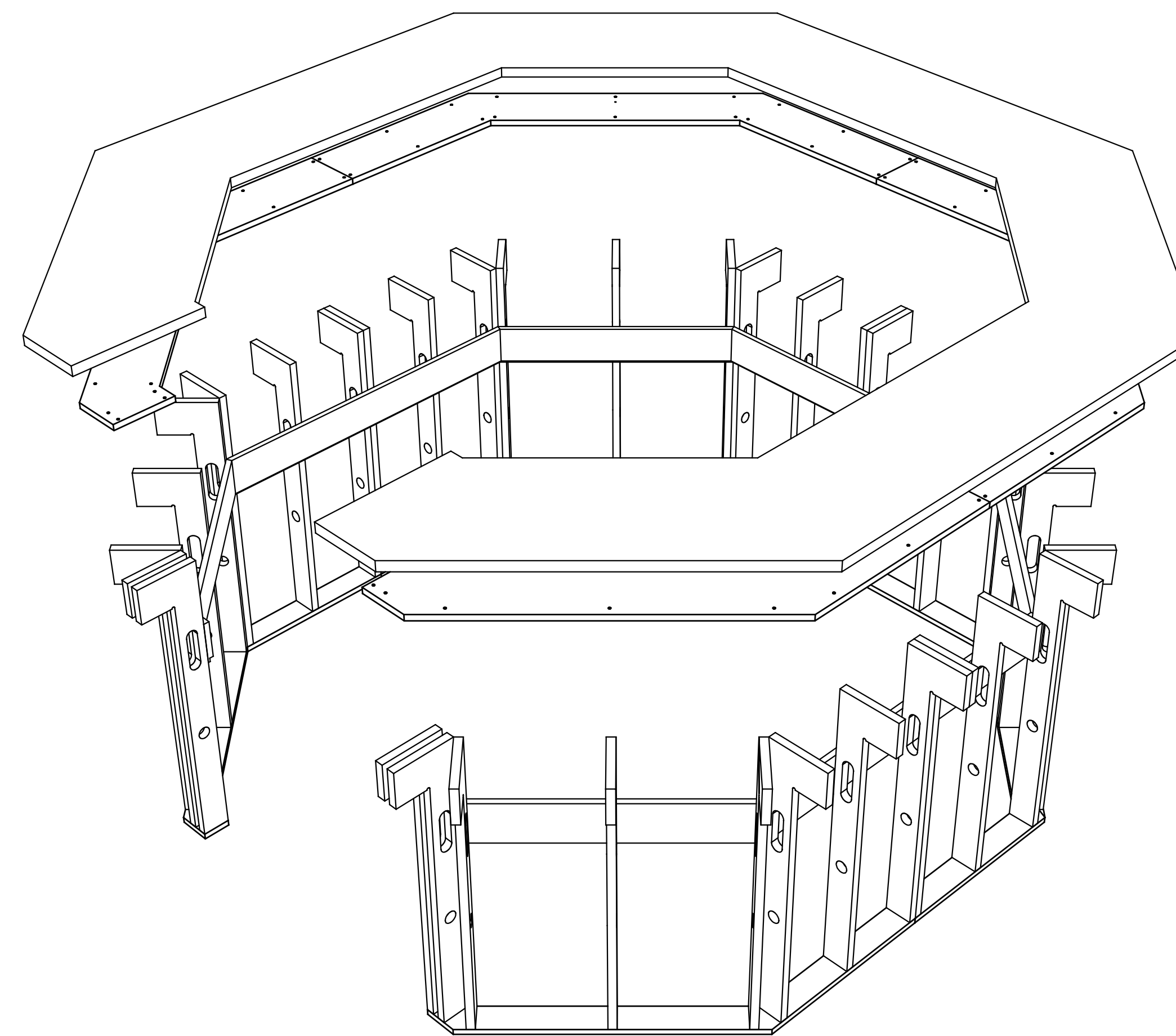
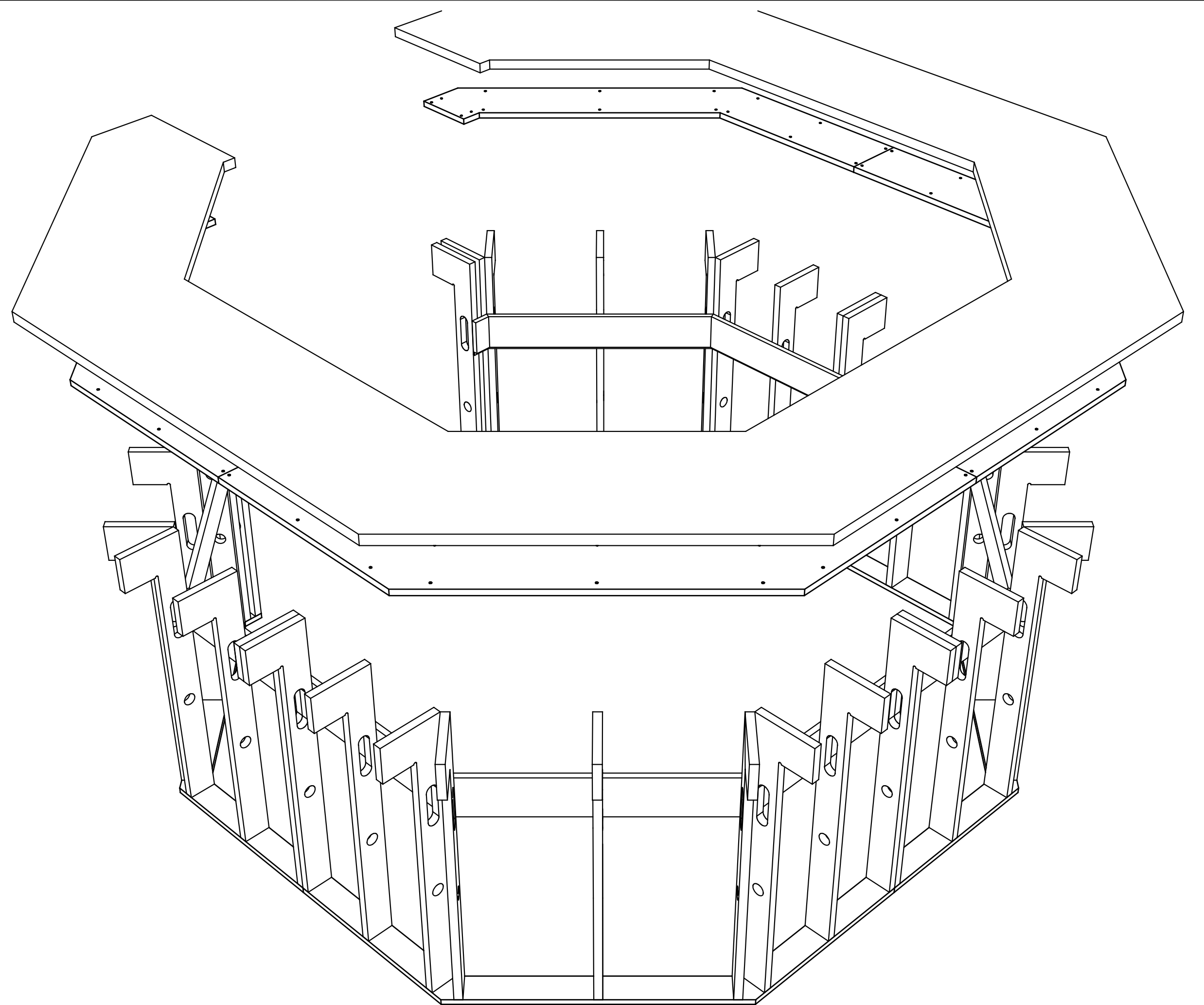
Job Name BUILDING
BALTIMORE, MD

Title RECEPTION/SECURITY DESK

Client

Miscellaneous
ISOMETRIC VIEWS

File Data	10:12
Date	12/08/2009
Scale	AS NOTED
Drawn By	MT
Job Number	JW102109-50R
Work Order	001
Page	1.05



MATERIALS

WD-1	MAPLE VENEER ON MEDIUM DENSITY FIBERBOARD CORE
WD-2	MAPLE VENEER ON PLYWOOD CORE
WD-3	SOLID MAPLE WOOD
AL-1	BRUSHED ALUMINUM 2022 FORMICA DECOMETAL
AL-2	ALUMINUM BAR, BRUSHED 1/2" X 1 3/4"
PL-1	PLASTIC LAMINATE ON PARTICLE BOARD CORE, COLOR T.B.D.
ST-1	STONE NATURAL GRANITE G763-CAFE IMPERIAL POLISHED

HARDWARE

H-1	WORK STATION HEAVY DUTY BRACKET 24" X 24"
H-2	WORK STATION HEAVY DUTY BRACKET 24" X 18"
H-3	MOCKETT EDP FLIP-TOP SERIES 2 1/2" HOLE PLASTIC GROMMET
H-4	S056 212 INVISIBLE HINGES
H-5	MAGNETIC CATCH 2.5 - 3.5 KG PULL 264-03.101

SPECIAL NOTES

ALL DIMENSIONS ARE BASED ON NUMBERS AND SCALES REFLECTED ON ARCHITECTURAL PLANS AND ARE SUBJECT OF FIELD DIMENSIONING AND VERIFICATION.

Submittals

1.	12/08/2009 FOR APPROVAL
2.	
3.	
4.	

Job Name

BUILDING
BALTIMORE, MD

Title

RECEPTION/SECURITY DESK

Client

Miscellaneous

DYE WALL FRAMING

File Data	1012
Date	12/08/2009
Scale	AS NOTED
Drawn By	MT
Job Number	JW102109-50R
Work Order	001
Page	1.06